

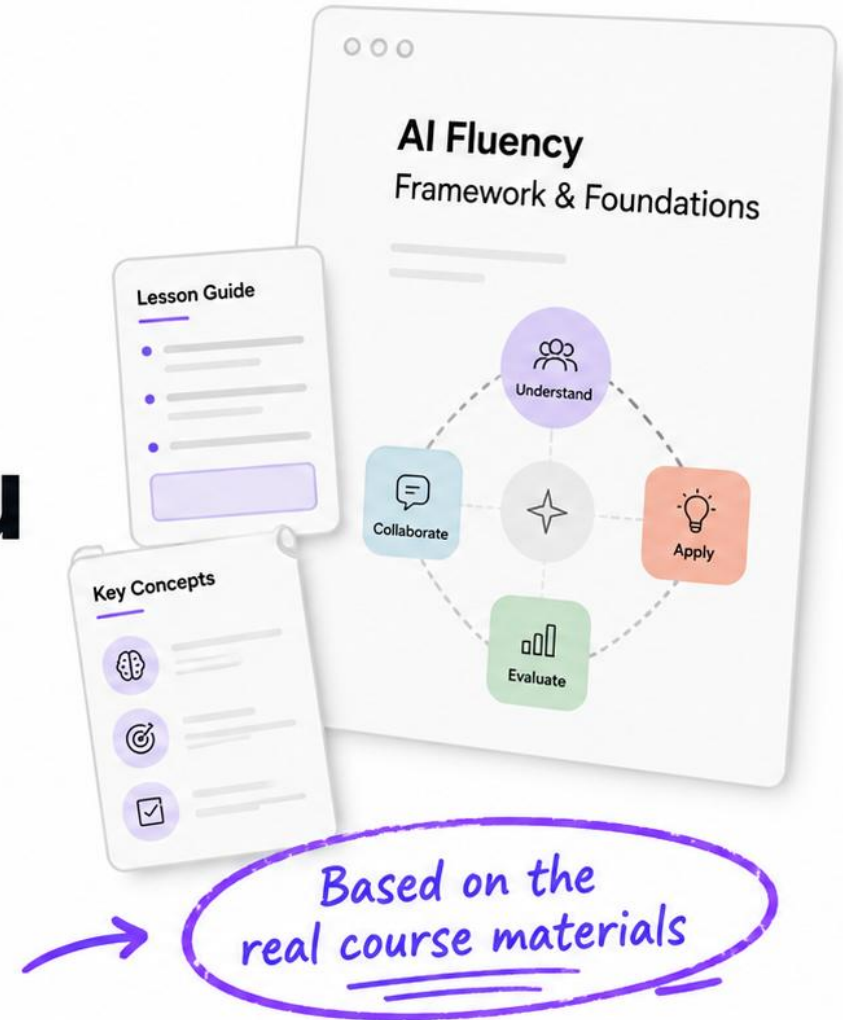


# I Watched Anthropic's AI Fluency Course For You

Prompting is only 25% of using AI well

A 20-minute summary of Anthropic's  
AI Fluency: Framework & Foundations

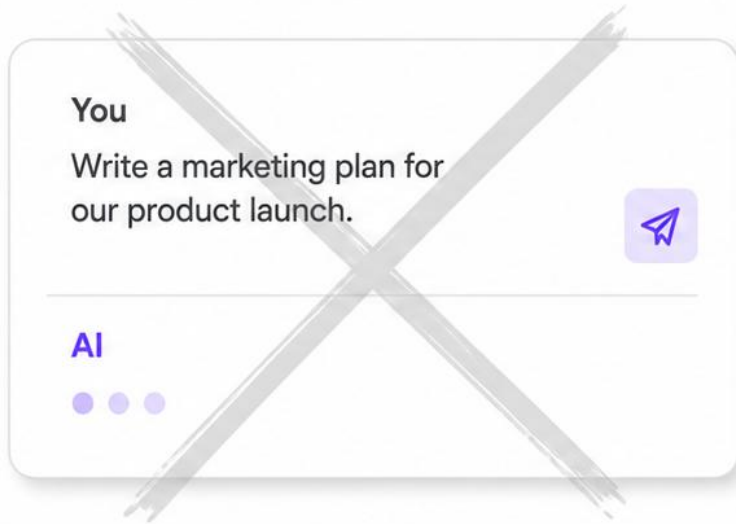
● AI with Kyle





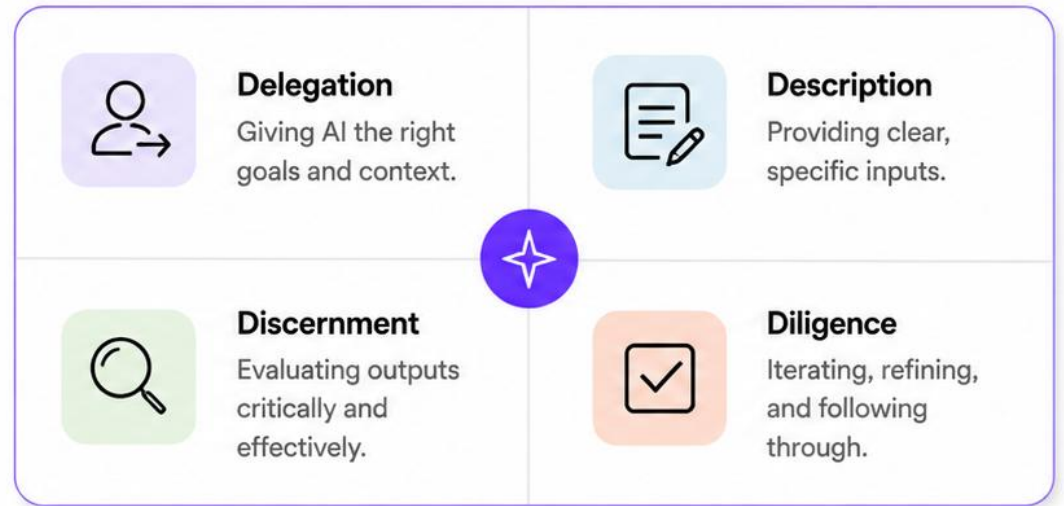
## The Big Takeaway

**Most people think  
AI skill = prompts**



**vs.**

**Anthropic says  
AI skill = 4 competencies**

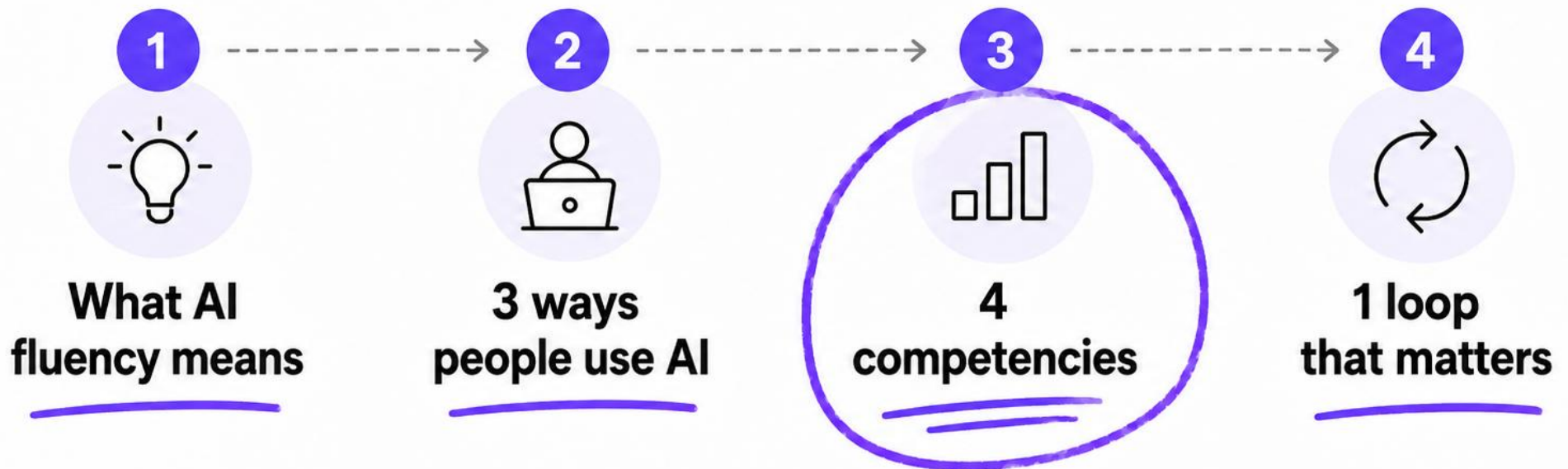


*Good AI use is not  
just about better prompts*



# The Course In 30 Seconds

The framework in one quick roadmap





# 3 Ways To Use AI

Three different interaction modes

1



## Automation

Let AI handle the repetitive work

2



## Augmentation

Use AI to enhance your capabilities

3



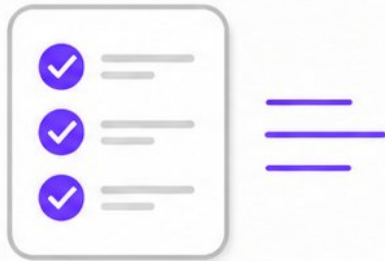
## Agency

Delegate outcomes and drive impact



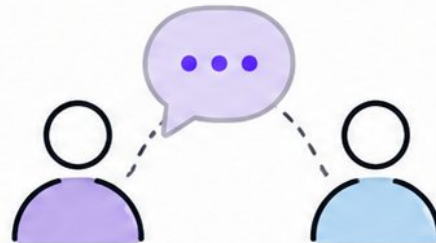


# What Those 3 Modes Actually Mean



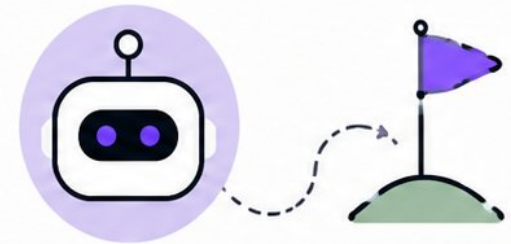
**Automation** = do this

---



**Augmentation** =  
work on this with me

---



**Agency** = go do this  
and come back

---



# The 4Ds



## Delegation

What should AI do?



## Description

How should I brief it?



## Discernment

Can I trust this output?



## Diligence

Did I use it responsibly?



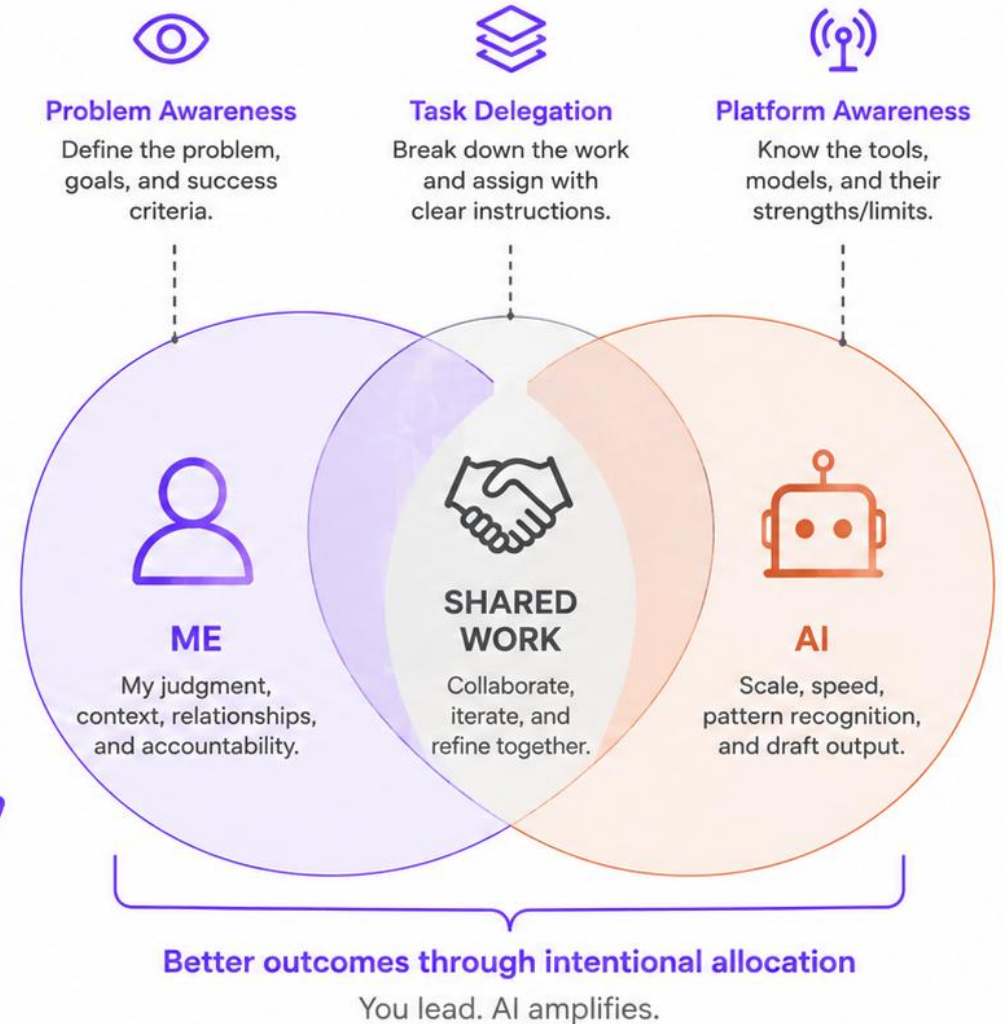
*If you remember one slide,  
remember this one*



# Delegation

- What should AI do?
- What should stay with me?
- Where is the leverage?

*The real first question is not what prompt should I use?*





# Delegation In Real Life



First draft:

yes



Final opinion:

probably you



Comparison table:

yes



Blind trust:

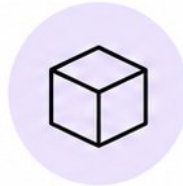
no

Bad AI use is often  
a work allocation problem



# Description

Anthropic's  
broader take  
on prompting



## Product

What do you want made?



## Process

How should it approach the task?



## Performance

How should it behave while collaborating?



# The Prompting Section

*Good checklist,  
not magic*



Prompting is Description in practice.



## Weak prompt

Write a marketing plan.



## Stronger prompt

Create a marketing plan for the launch of a productivity app.  
Target audience: remote professionals.  
Constraints: \$20k budget, 3-month timeline.  
Output: bullet list of key initiatives with brief rationale.



Context



Examples



Constraints



Steps



Think first



Role / tone



AI with Kyle



# Discernment

The missing half of good AI use.



**Output**  
result



**Thinking**  
reasoning

*Your quality control layer*



**Behaviour**  
collaboration style

*Description asks well.  
Discernment judges well.*



# AI Often Fails Smoothly

Goal: dramatize why Discernment matters.

- ✓ Polished does not mean right
- ✓ Confidence does not mean competence

● AI with Kyle

AI Answer Very confident

The Industrial Revolution began in England in the mid-18th century, driven by innovations like the Spinning Jenny (1764), water frame (1769), and steam engine (James Watt, 1776). These advances transformed textile production, powered factories, and fueled economic growth across Europe and North America.

👍 🗨️ 📄 📤



⚠️ **What's under the surface**

- ❗ **Made-up or inaccurate facts**  
Spinning Jenny (1764) and water frame (1769) dates are off.
- ? **Weak reasoning**  
Overly simplified cause and effect.
- 🧩 **Missing context**  
Ignores global contributors and key social factors.
- 🔊 **Confident tone**  
Sounds certain, but may be confidently wrong.

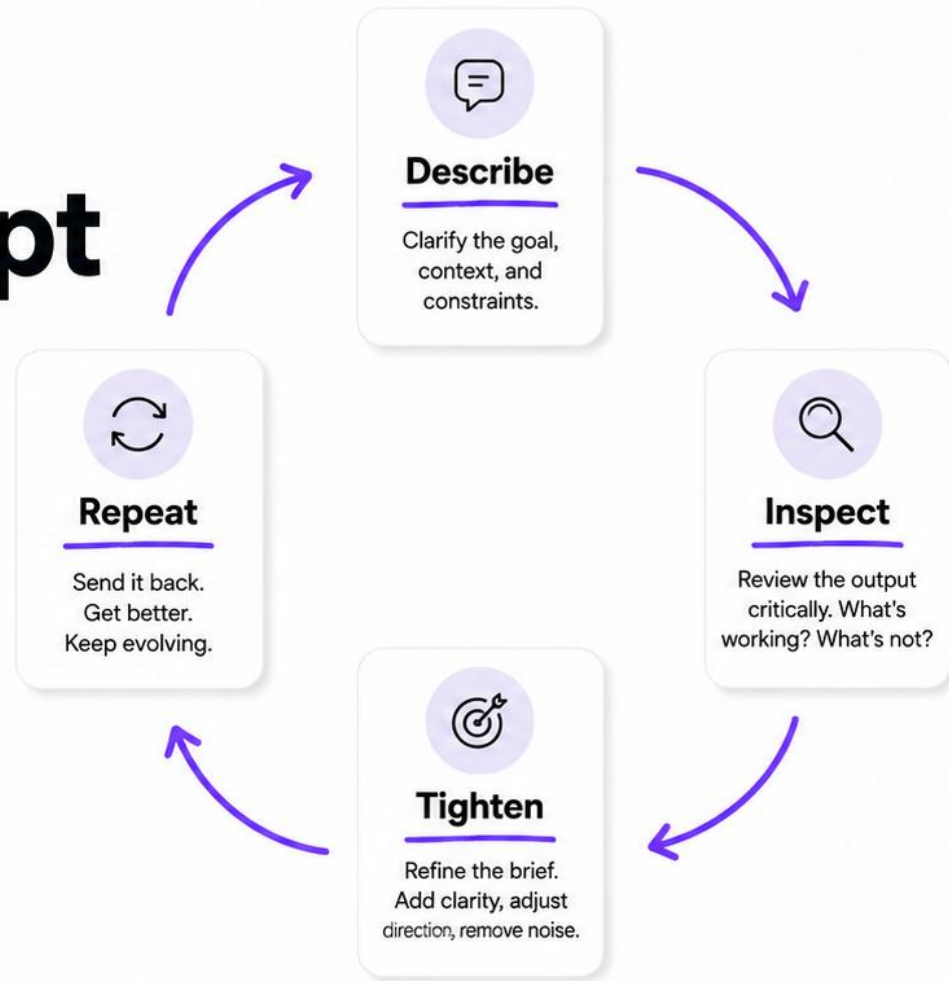
*Polished rubbish can hide red flags.*



# The Best Concept In The Course

The Description -> Discernment loop

*This is how  
real AI work  
actually happens*



AI with Kyle



Internet version = prompt in, answer out.



Real version = brief, review, redirect, iterate.



# Diligence

Introduce the ethics and responsibility layer without sounding preachy.

*Least sexy slide.  
Maybe most important.*



## Creation

Right tool, context, data.



## Transparency

Who needs to know AI helped.



## Deployment

Did you verify this before using it?



# What Diligence Looks Like In Real Life

Goal: make the responsibility layer concrete.

<input checked="" type="checkbox"/>		<b>Right tool</b>	Failure mode: using the wrong tool for sensitive data.
<input checked="" type="checkbox"/>		<b>Right data</b>	Failure mode: using outdated, incomplete, or off-policy data.
<input checked="" type="checkbox"/>		<b>Right disclosure</b>	Failure mode: unverified stats in a client deck.
<input checked="" type="checkbox"/>		<b>Right verification</b>	Failure mode: posting AI-generated claims you didn't check.

*If this is wrong tomorrow, could I explain what AI did and what I checked?*



# What Anthropic Gets Right

Goal: give the course **genuine credit**.



## **Judgment over hacks**

It teaches you how to think,  
not just what to prompt.



## **Collaboration over magic**

It positions AI as a partner,  
not a replacement.



## **Human expertise still matters**

It reinforces that your  
experience is the edge.

More mature than  
most beginner AI content.